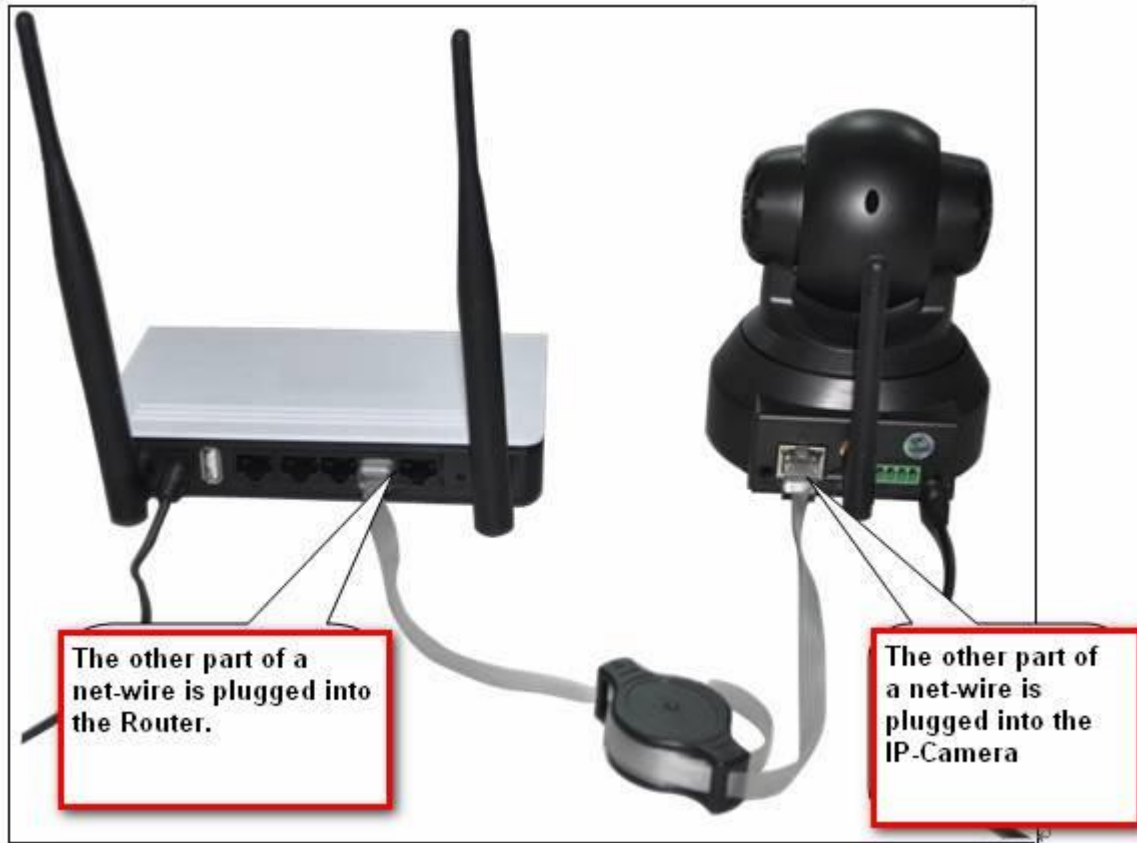


# Pangolin T Series IP Camera

## Quick Installation Guide For Pangolin T Series

### 一. Hardware Installation

Firstly, Power the IP-Camera, and use a net-wire to wire IP-Camera and Router. Check if the Power light(yellow) and network light(green) are on.If not, check the net-wire and power supply.



Note:Please use power supply adapter provided by Vstarcam to prevent harming the IP-Camera.

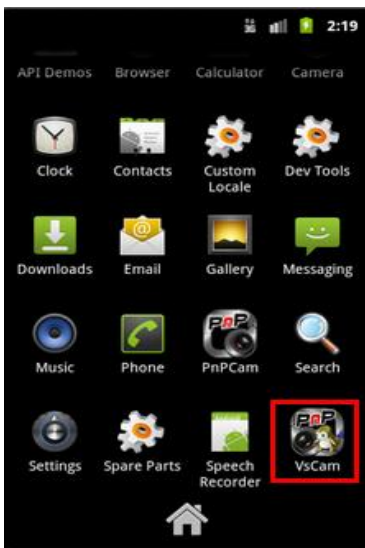
**Note:**If want to reset a IP-Camera to default settings,please keep pressing the RESET button located on the bottom of a IP-Camera for 10 seconds.

### 二. Android mobile client

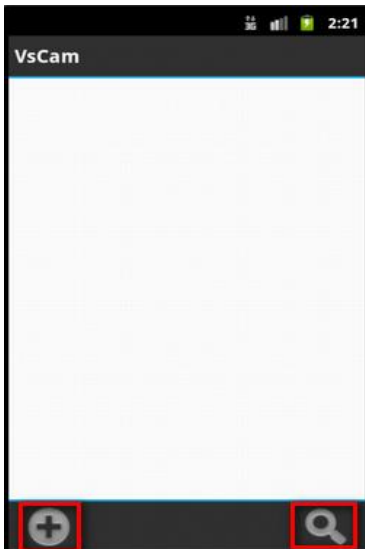
1. **Install Client :** access <http://cd.gocam.so> on Mobile Browser to download Client or just use QR code to download.



2. When finish installing plug&play client,there will be a icon displayed in the desktop.



3. Run the VsCam, then add new camera



#### 4. Press "Scan" to add Camera



Use mobile to scan QR code(can be seen on the bottom on the IP camera or printed on the label). When mobile scans the code successfully, there will be a string displayed on the Textbox.

Press "Search" button, then mobile will automatically search IP cameras located in the LAN.

Input the IP camera's password, the default one is : 888888

5. Watch video: Click the label, then you can view the video.



### 三. View via iPhone

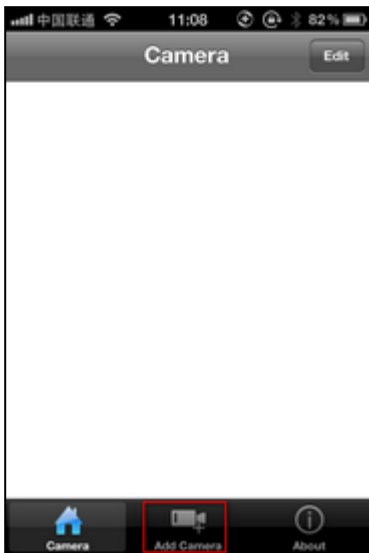
1. **Install the P2PCam264 software:** access this <http://cd.gocam.so> via the phone web browser, and follow the instruction to download or scan the QR code to download the PnP version software.



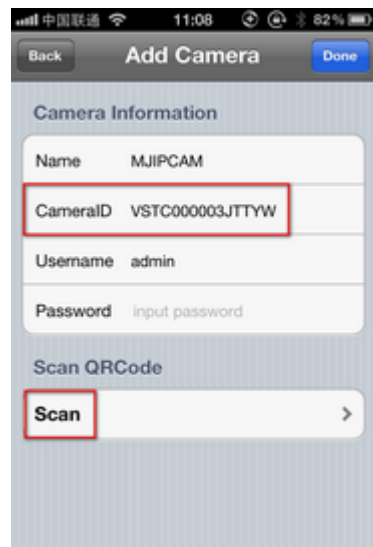
2. "VsCam" will be shown on the phone desktop after success installation.



3. Run the software and click “Add” to add cameras

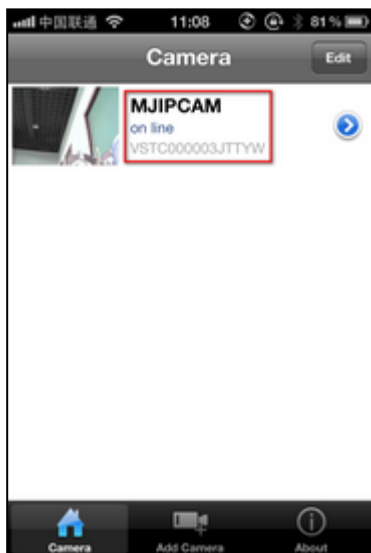


4. Click “Scan”, then scan the camera's UID.



Point iPhone camera towards the UID (The UID can be found on the bottom of the IP camera or the warranty card). After a “beep” sound, the UID is scanned successfully. Also you can click “search” to add cameras in the LAN, or manually " Add camera", to input the camera's UID and password. The default password is blank.

**5. Click "camera" to view the live video.**



**Notes:**

1.If the device has Pan/Tilt function, users can slide up and down on the video screen to control the camera P/T.

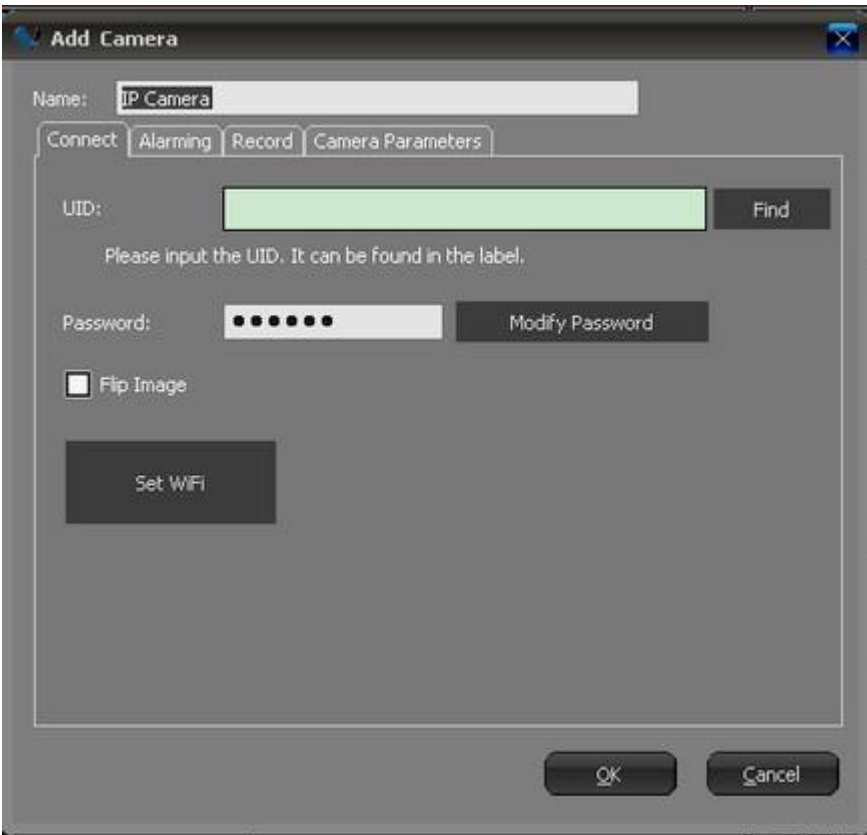
**四. Usage of PC client**

1.You can get a PC client from the disk or download from <http://cd.gocam.so>



When finish installing PC client, there will be a icon displayed on desktop.

2.add new IP-Camera



To add a Camera located in LAN, press "Find" button, then choose a Camera from the display list. You can also add a Camera through inputting UID. (UID is printed on the label or written on the bottom of a Camera) the default password is : 888888.

3. Press "OK" button to finish adding a Camera.



press "Set WIFI",to set a Camera to wirelessly connect to Router.

5. Double click a Camera's lable on the right side, then can view video from camera.

